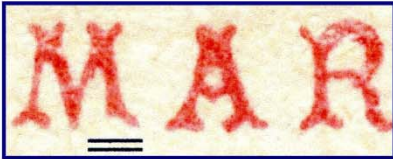





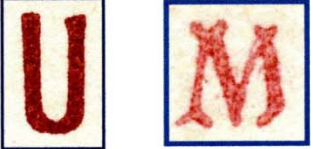



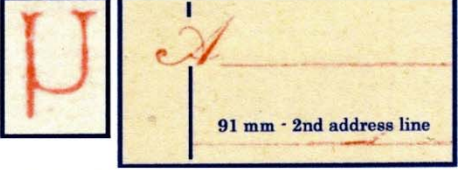

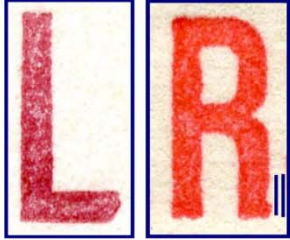

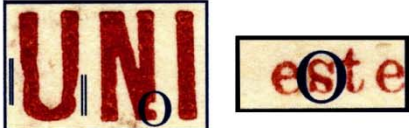
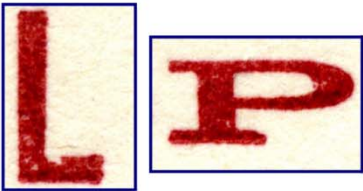




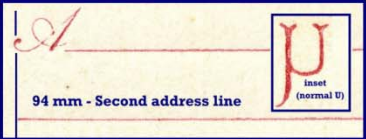

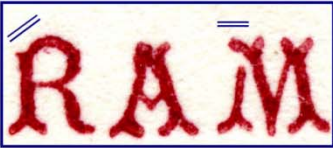




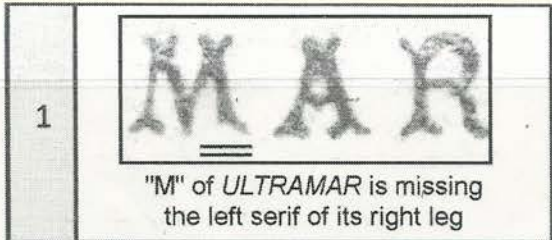
1882 UPU Postal Cards -- 1882 Tarjetas para la UPU

No.	Graphic / Variety Description
1	 <p>"M" of <i>ULTRAMAR</i> is missing the left serif of its right leg</p>
2	 <p>Nicked "N" and "V" of <i>UNIVERSAL</i></p>
3	 <p>First address line is short by 1 mm; faint period or no period behind "direccion"</p>
3a	 <p>No tilde on Ñ of <i>ESPAÑA</i> Transitory - 1882 reprints. Note: Similar error on Variety 10</p>
3b	 <p>Broken serif of left foot of first "R" of <i>ULTRAMAR</i>. Transitory - Part of 1882 only.</p>
4	 <p>Multiple nicks on the "U" of <i>UNION</i></p>

No.	Graphic / Variety Description
5	 <p>Smashed top right end of "U" of <i>UNIVERSAL</i> and missing right serif of right leg of "M" of <i>ULTRAMAR</i></p>
6	 <p>Sharp end of the "S" in <i>POSTAL</i></p>
6a	 <p><i>ULTAAMAR</i> error Transitory - 1882 reprint.</p>
6b	 <p>Breaks in the "SA" of <i>UNIVERSAL</i>; large period behind <i>ULTRAMAR</i>. Transitory - 1882 reprints.</p>
6c	 <p>"U" of <i>ULTRAMAR</i> broken on the bottom only, sometimes in conjunction with a short (91mm) 2nd address line. Transitory - Part of 1881 &amp; 1882.</p>
7	 <p>Ñ of <i>ESPAÑA</i> is chipped</p>

No.	Graphic / Variety Description
8	 <p>Bottom corner of "L" of <i>POSTAL</i> is missing and there is a small indentation in the "R" of <i>UNIVERSAL</i></p>
8a	 <p>Top of first "A" of <i>ULTRAMAR</i> nicked; crossbar of "A" of <i>UNIVERSAL</i> thin; broken "L" of <i>UNIVERSELLE</i>. Transitory - Part of 1882 only.</p>
9	 <p>"UN" of <i>UNIVERSAL</i> damaged; "s" of <i>este</i> inverted</p>
10	 <p>Chip in the inside angle of the "L" of <i>UNIVERSAL</i> and tapered serif on the base of the "P" of <i>ESPAÑA</i></p>
10a	 <p>No tilde on Ñ of <i>ESPAÑA</i> Transitory - 1882 reprints. This error was made in both Variety 3 and Variety 10 in 1882.</p>
11	 <p>Second "A" of <i>ESPAÑA</i> rounded off</p>

No.	Graphic / Variety Description
12	 <p>Second "A" of <i>ESPAÑA</i> chipped</p>
12a	 <p>Raised period after <i>ULTRAMAR</i>. Transitory - Part of 1882 only. Sub-variety of Variety 12.</p>
12b	 <p>94 mm - Second address line</p> <p>Second address line short, 94 mm, commencing below left side of the "A" Transitory - Part of 1882 only Sub-variety of Variety 12.</p>
13	 <p>Broken top serif of "E" and nicked first "A" of <i>ESPAÑA</i></p>
14	 <p>Top serif of "R" of <i>ULTRAMAR</i> is missing; sometimes in conjunction with broken "M" of <i>ULTRAMAR</i></p>
15	 <p>"U" of <i>ULTRAMAR</i> is broken on both the top and bottom</p>
16	 <p>Second "A" of <i>ULTRAMAR</i> is chipped</p>
D1	Reply side of double cards only: No period after <i>RESPUESTA</i>
D2	Message side of double cards only: No period after <i>respuesta</i>



Ed 11a  
Var  
No Cat.  
24E



Ed 12  
Var  
No Cat  
20E

2

UNIVER

Nicked "N" and "V" of UNIVERSAL



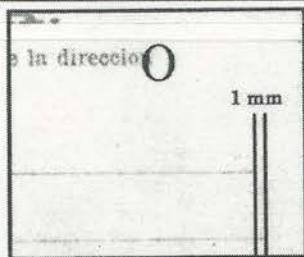
2nd address line bent down at start

Fd 11cc

48e

2da línea doblada hacia abajo al principio

3



First address line is short by 1 mm; faint period or no period behind "direccion"



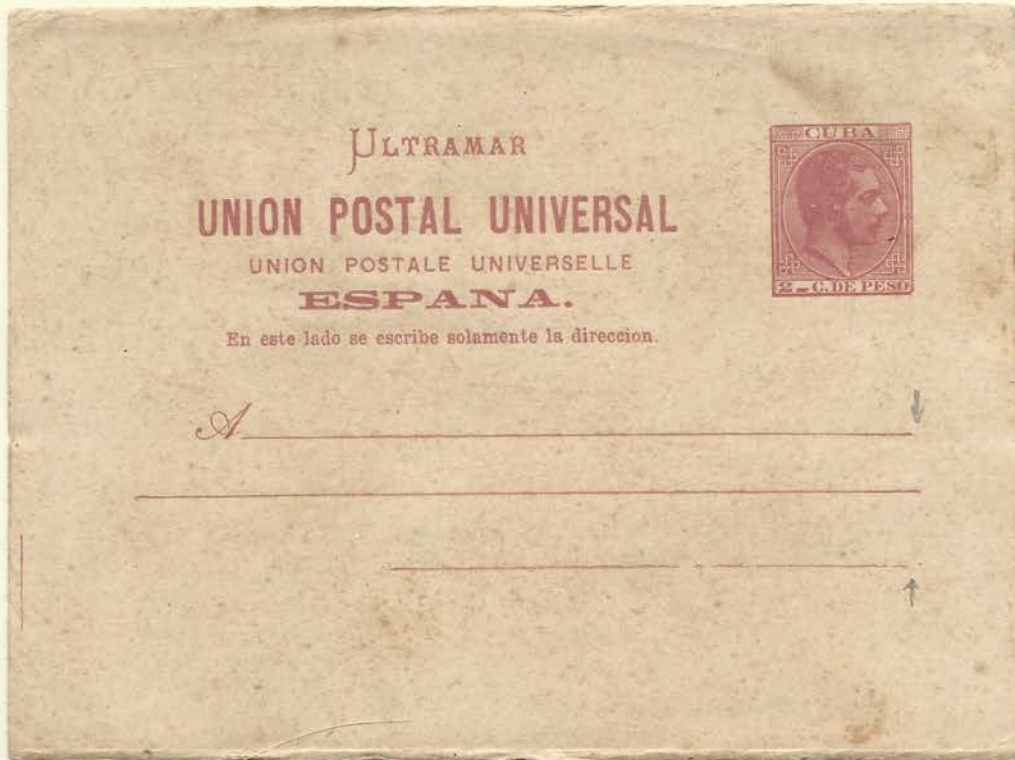
Fd 11cc

30e

UNION POSTALE UNIVERSELLE  
**ESPANA.**

3a

No tilde on Ñ of *ESPAÑA*  
Transitory - 1882 reprints.  
Note: Similar error on Variety 10

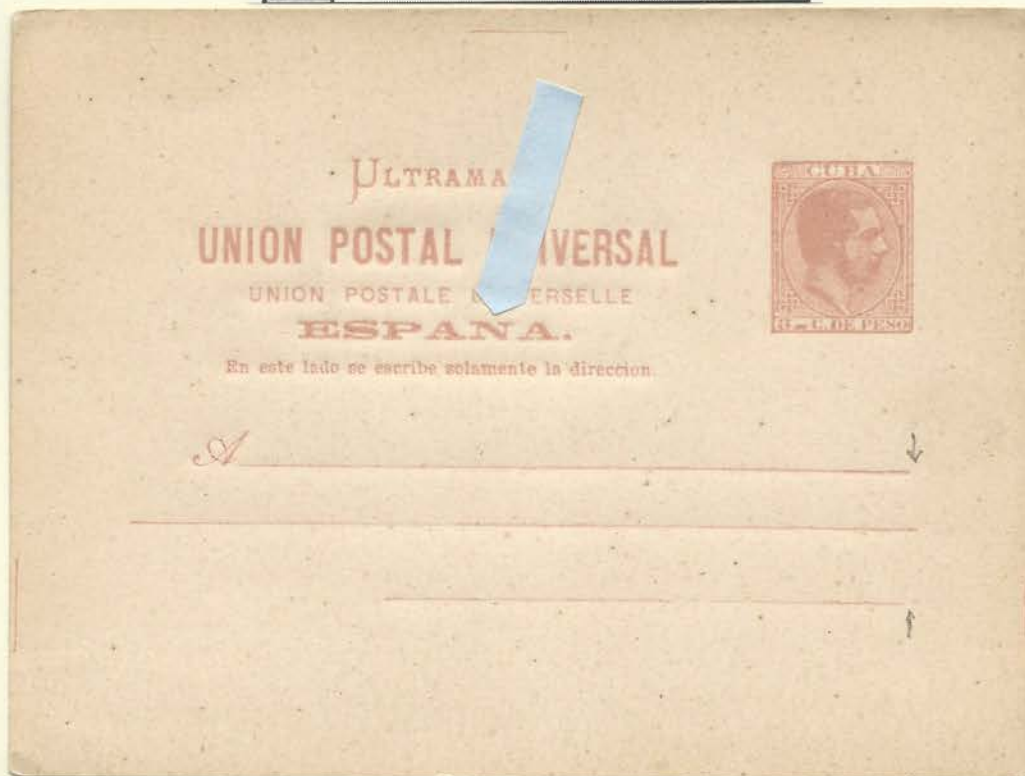


Ed 11Ca  
110E

UNION POSTALE UNIVERSELLE  
**ESPANA.**

3a

No tilde on Ñ of *ESPAÑA*  
Transitory - 1882 reprints.  
Note: Similar error on Variety 10



Ed 12Ca  
120E

4

# UNION

Multiple nicks on the "U" of UNION

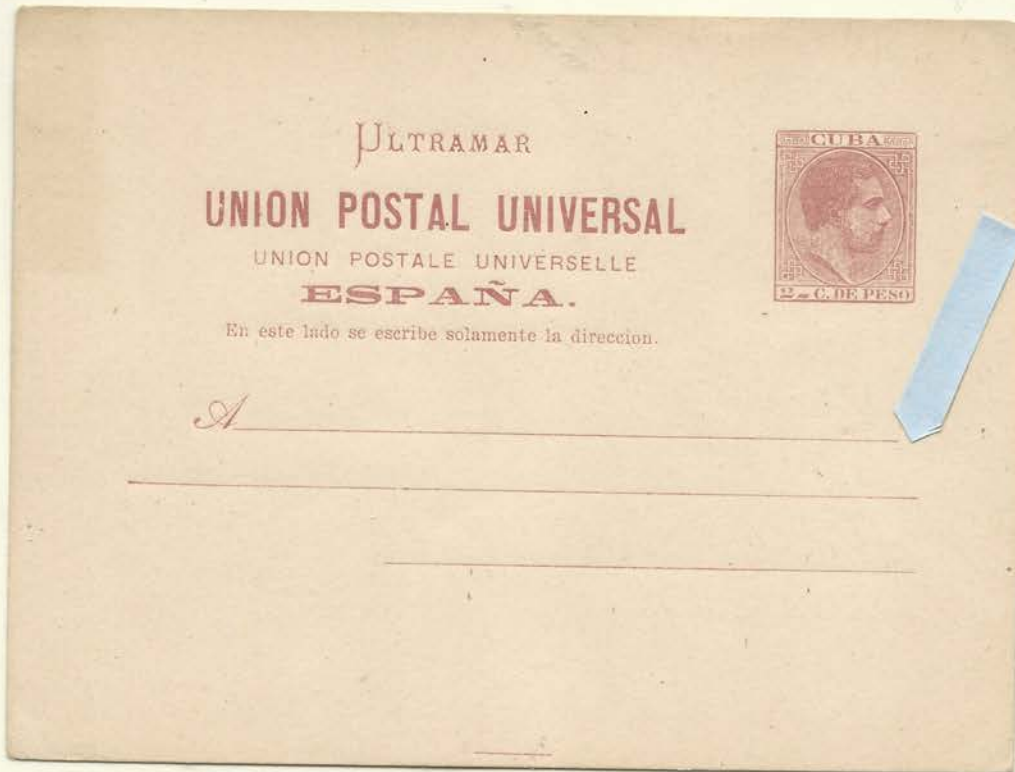


Ed 11a  
Var  
No Cat.  
24e

5



Smashed top right end of "U" of UNIVERSAL and missing right serif of right leg of "M" of ULTRAMAR

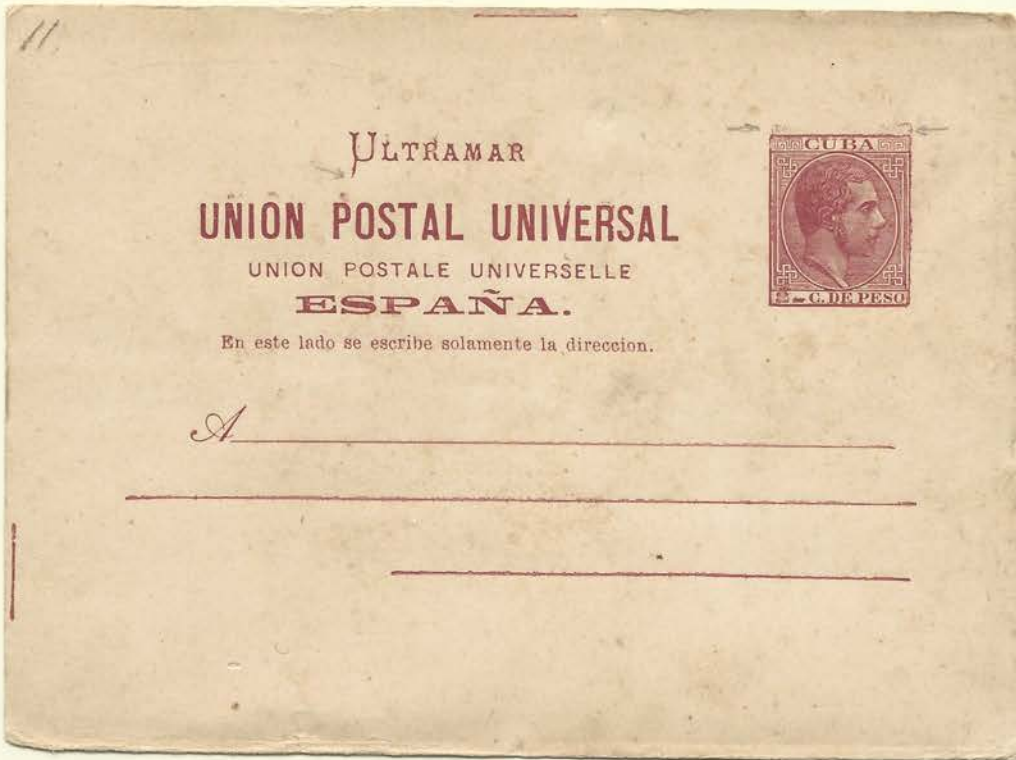


Ed 11a  
30G

5



Smashed top right end of "U" of UNIVERSAL and missing right serif of right leg of "M" of ULTRAMAR

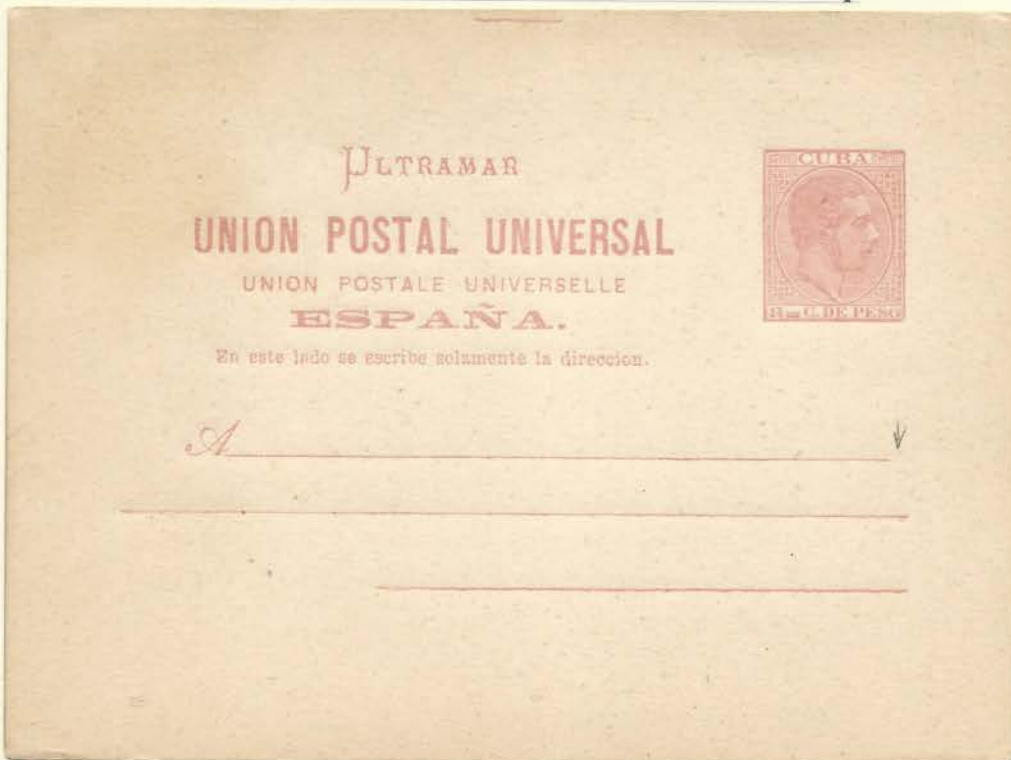


Kiss at Top of Stamp.

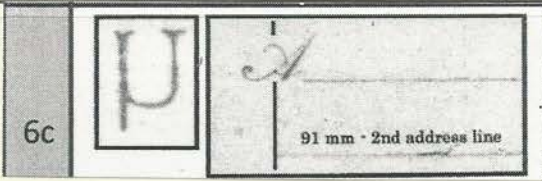
Ednei 30ct

Vat. ligera d'oble impresion parte superior del sello

5



Ednei 36c



"U" of *ULTRAMAR* broken on the bottom only, sometimes in conjunction with a short (91mm) 2nd address line. Transitory - Part of 1881 & 1882.



Ed 12c  
42c



Ed 12c  
30c



UNIVERSAL

6b

ULTRAMAR<sup>®</sup>

Breaks in the "SA" of *UNIVERSAL*;  
large period behind *ULTRAMAR*.  
Transitory - 1882 reprints.

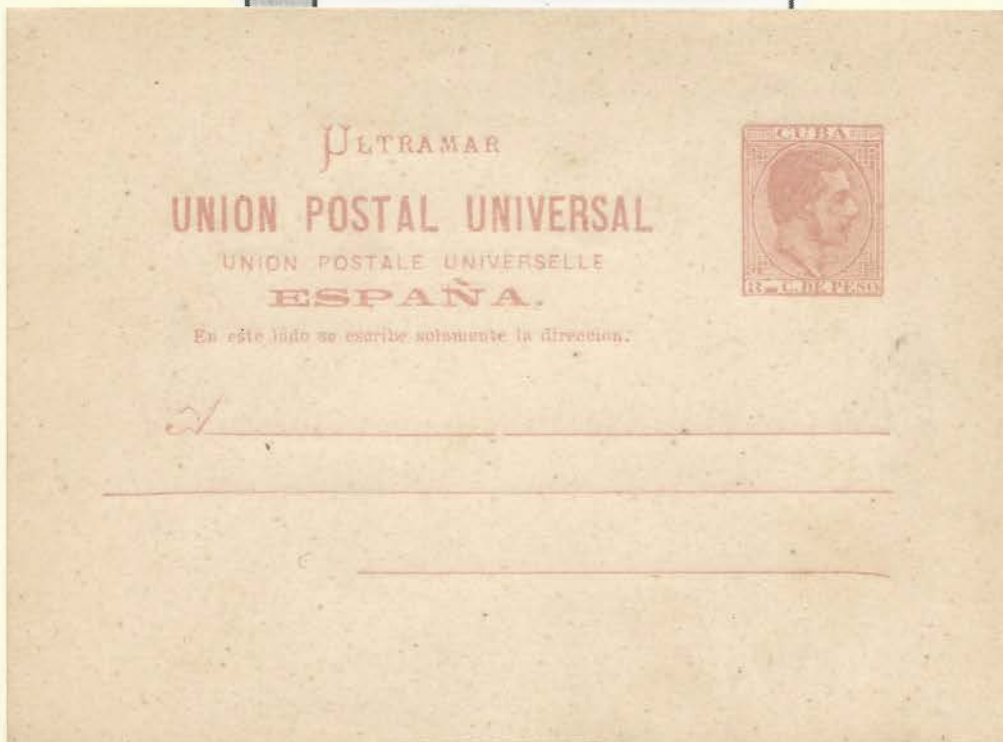


Ed 11cb  
52e

UNIVERSAL

6b

ULTRAMAR<sup>®</sup>



Ed 12cb  
60e

9

UNI

este

"UN" of UNIVERSAL damaged;  
"s" of este inverted

"F" en lugar de "P" en "POSTALE".



Ed 11a  
Var  
No Cat.  
40E

9

UNI

este

"UN" of UNIVERSAL damaged;  
"s" of este inverted



Ed 12  
Var  
No Cat  
40E

9

UNI

este

"UN" of UNIVERSAL damaged;  
"s" of este inverted

ULTRAMAR

UNION POSTAL UNIVERSAL

UNION POSTALE UNIVERSELLE

ESPAÑA.

En este lado se escribe solamente la direccion.



A

Three horizontal lines for an address, with a small arrow pointing to the first line.

Edrich  
+  
Edneij  
40E

11



Second "A" of  
ESPAÑA  
rounded off



Ed 11a  
Var  
No Cat  
30e

11



Second "A" of  
ESPAÑA  
rounded off

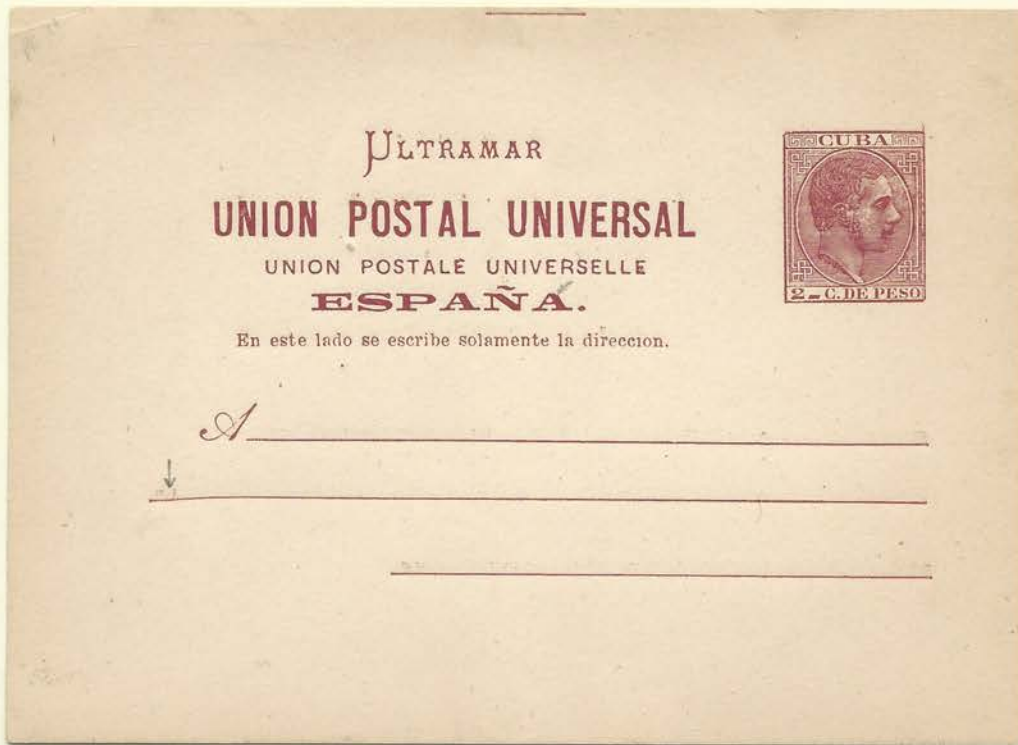


Ed 12a  
Var  
No Cat  
40e

12



Second "A" of  
ESPAÑA  
chipped



Edna  
Var  
No Cat  
+  
Edicj  
30E

12



Second "A" of  
ESPAÑA  
chipped



Break on  
1st  
address  
line

Rotura  
en la 1era  
linea

Ditto  
+  
Rotura  
40E

12



Second "A" of  
ESPAÑA  
chipped



Ed 12  
CV 22  
Euros

13

ESPAÑA.

Broken top serif of "E" and  
nicked first "A" of *ESPAÑA*

VARIEDAD: "E" DE "ESPAÑA" ROTA.  
3 c. de Peso, rosa.

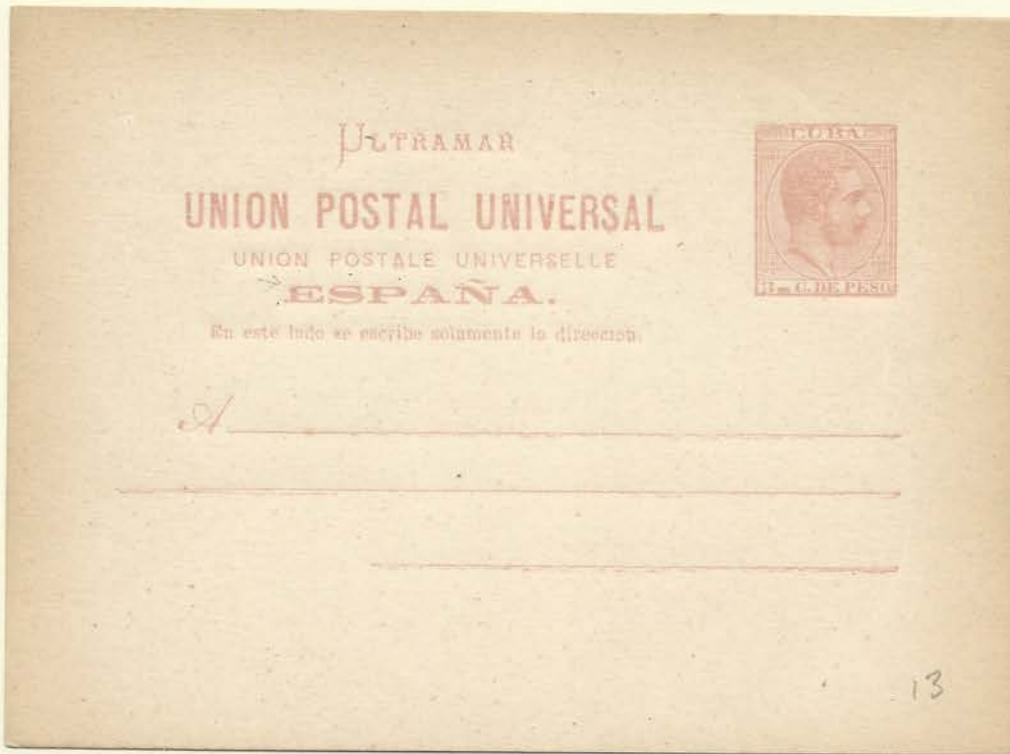


Ed 1255  
60c

13

**ESPAÑA.**

Broken top serif of "E" and  
nicked first "A" of ESPAÑA



Ed 1209  
60E

14

**RAM**

Top serif of "R" of ULTRAMAR is  
missing; sometimes in conjunction  
with broken "M" of ULTRAMAR



Ed 120a  
Var  
No Cat.  
30E

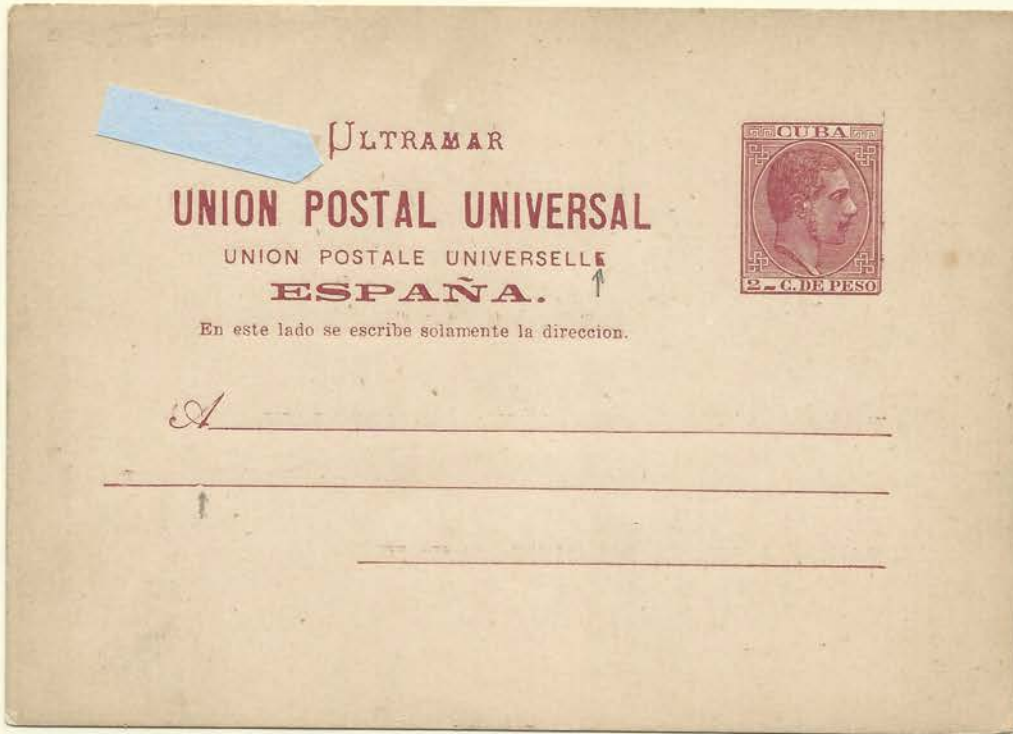


15

ULTRAMAR

"U" of ULTRAMAR is broken on both the top and bottom

"U" de ULTRAMAR rota.  
2 c. de Peso, carmín.



Ed 11c  
+  
Vars  
No cat  
406

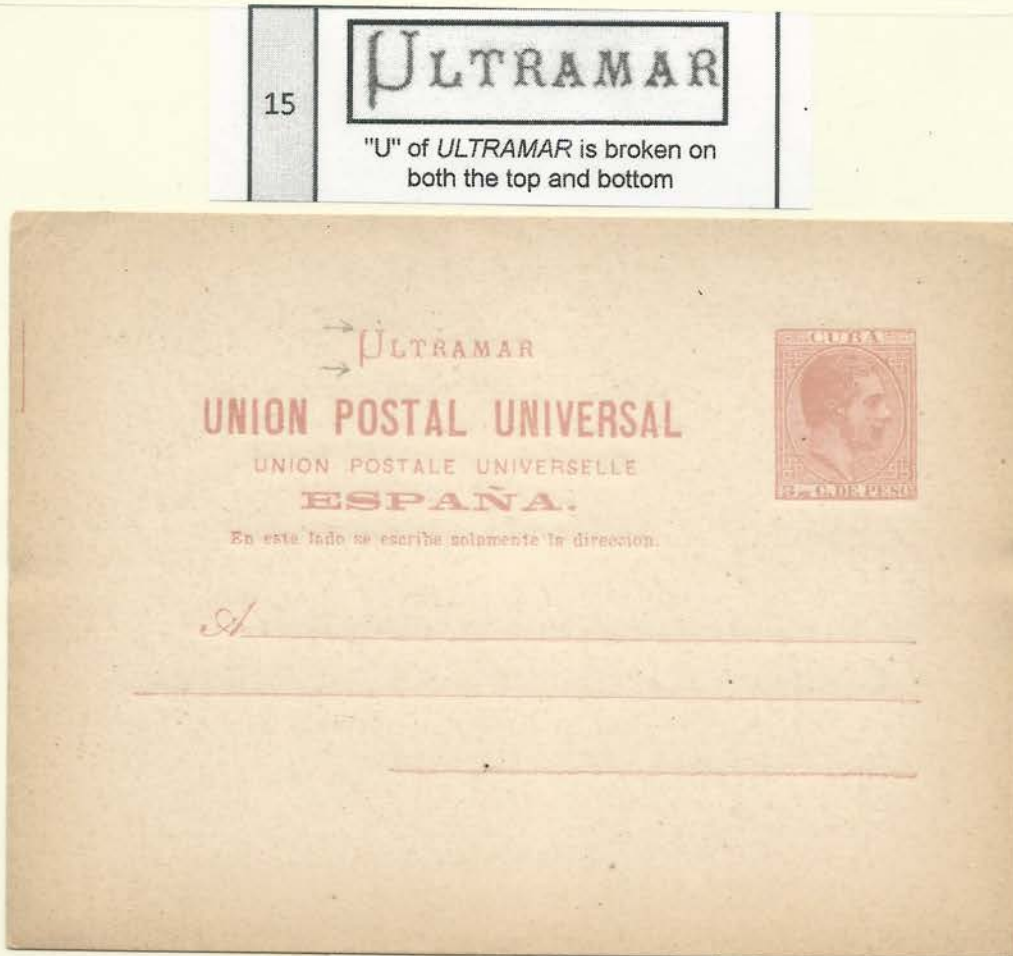
15

ULTRAMAR

"U" of ULTRAMAR is broken on both the top and bottom

"U" de ULTRAMAR rota.

3 c. de Peso, rosa.



Ed 12c  
42E

15

ULTRAMAR

"U" of ULTRAMAR is broken on both the top and bottom

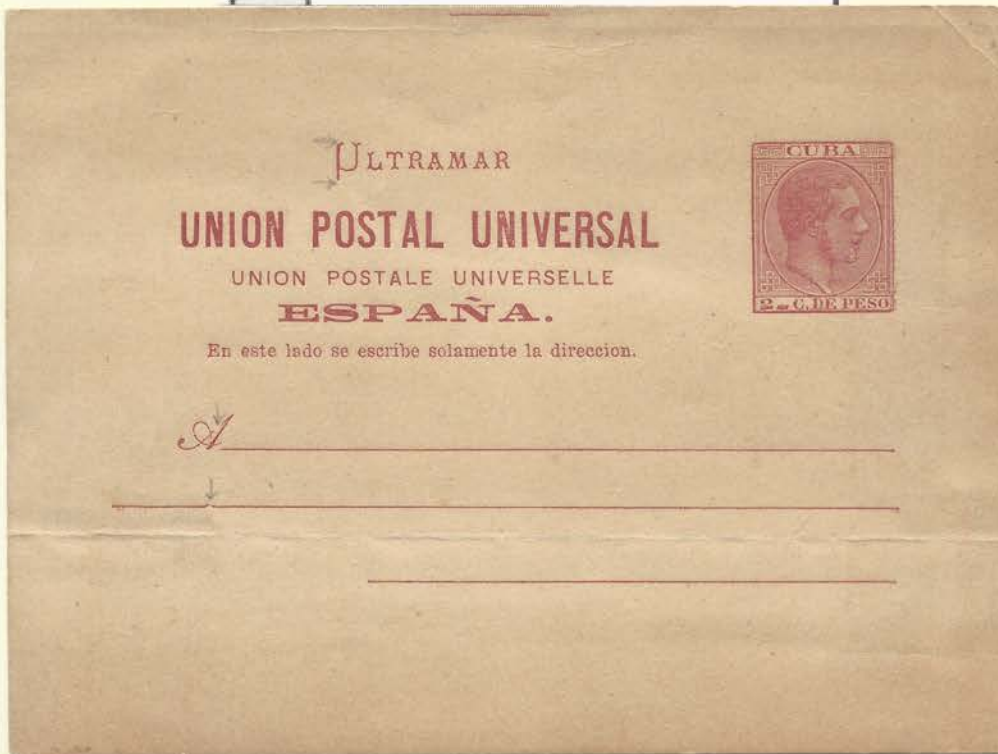


Ed 11C  
36E

15

ULTRAMAR

"U" of ULTRAMAR is broken on both the top and bottom



Break in  
2nd address  
line

Rótura en  
la 2da  
línea

Ed 11C  
Var.  
40E

16

MAR

Second "A" of *ULTRAMAR*  
is chipped

ULTRAMAR  
UNION POSTAL UNIVERSAL  
UNION POSTALE UNIVERSELLE  
ESPAÑA.



En este lado se escribe solamente la dirección ↗

✓

Ed 11a  
Var.  
No Cat.  
406

16

MAR

Second "A" of ULTRAMAR  
is chipped

ULTRAMAR  
UNION POSTAL UNIVERSAL  
UNION POSTALE UNIVERSELLE  
ESPAÑA.

En este lado se escribe solamente la direccion



*A* \_\_\_\_\_  
\_\_\_\_\_  
\_\_\_\_\_

Ed 12 a  
Var  
No Cat.  
40c

2

UNIVER

Nicked "N" and "V" of UNIVERSAL

RESPUESTA.



UNION POSTAL UNIVERSAL  
UNION POSTALE UNIVERSELLE  
ESPAÑA.

ULTRAMAR

En este lado se escribe solamente la direccion



ULTRAMAR  
UNION POSTAL UNIVERSAL  
UNION POSTALE UNIVERSELLE  
ESPAÑA.

En este lado se escribe solamente la direccion.

A

La otra tarjeta es para la respuesta

10

L P

Chip in the inside angle of the "L" of  
UNIVERSAL and tapered serif on the  
base of the "P" of ESPAÑA

Ed 13  
Var  
No Cat.  
40c

4

# UNION

Multiple nicks on the "U" of *UNION*

D1

Reply side of double cards only:  
No period after *RESPUESTA*

### VARIEDADES

**IDA.** Sin punto después de "dirección"

**VUELTA.** 1ª línea de la dirección 10 mm. más corta al final y sin punto después de "RESPUESTA"



Ed 13ce  
60e

16

# MAR

Second "A" of *ULTRAMAR*  
is chipped

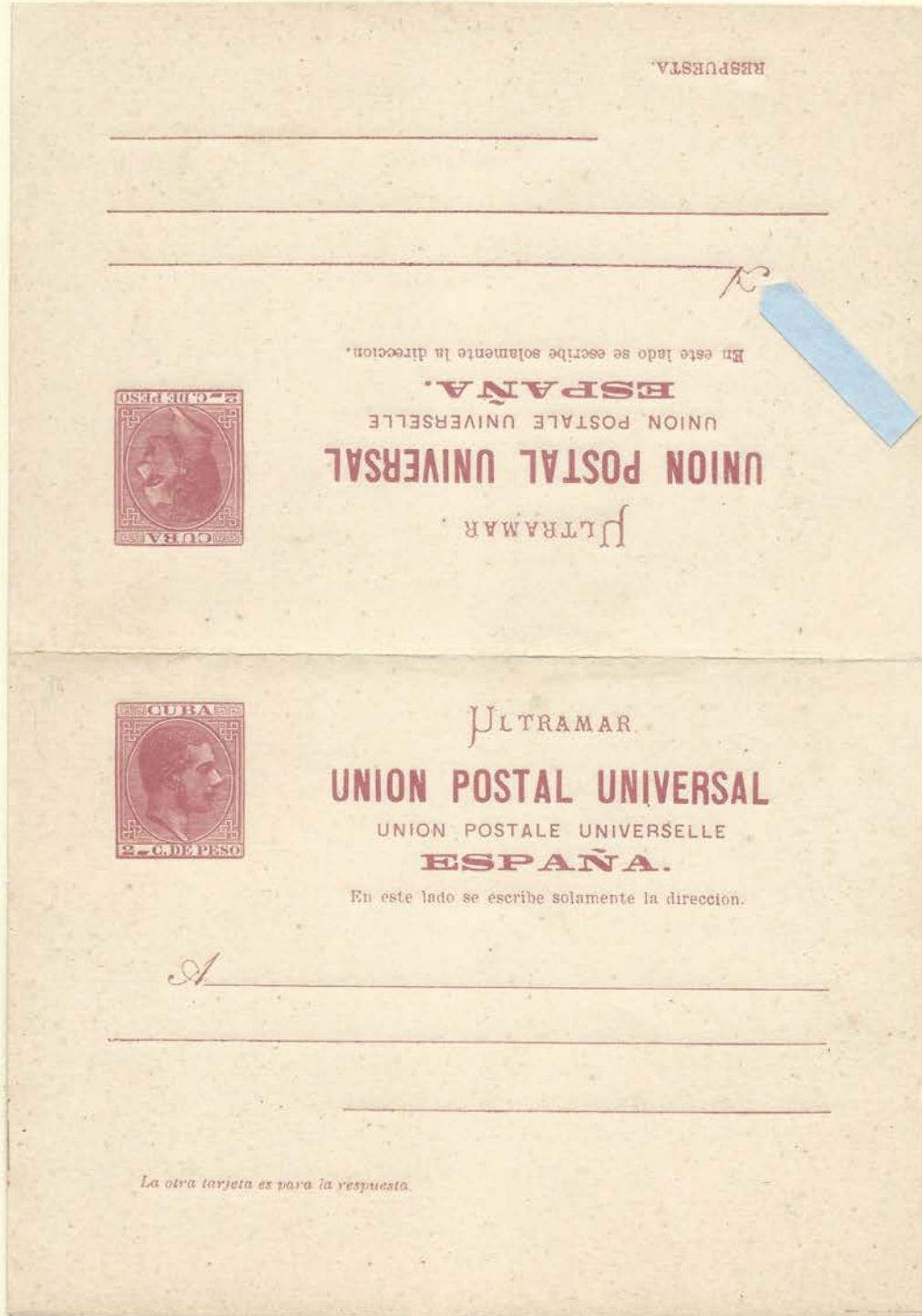
6

POSTAL

Sharp end of the "S" in *POSTAL*

VARIEDADES

VUELTA: Voluta de la "A" de la dirección interrumpida.



Fd13  
Var  
No Cat  
40E

12



Second "A" of  
*ESPAÑA*  
chipped

11



Second "A" of  
ESPAÑA  
rounded off

13c

RESPUESTA

En este lado se escribe solamente la direccion.

ESPAÑA.  
UNION POSTALE UNIVERSELLE  
UNION POSTAL UNIVERSAL  
ULTRAMAR

1881 3096

ULTRAMAR  
UNION POSTAL UNIVERSAL  
UNION POSTALE UNIVERSELLE  
ESPAÑA.  
En este lado se escribe solamente la direccion.

A

La otra tarjeta es para la respuesta

13c

la direccion O

1 mm

3

D2

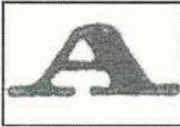
First address line is short by 1 mm;  
faint period or no period  
behind "direccion"

Message side of double cards only:  
No period after *respuesta*

Ed 12c  
+  
Ed 13c  
60c



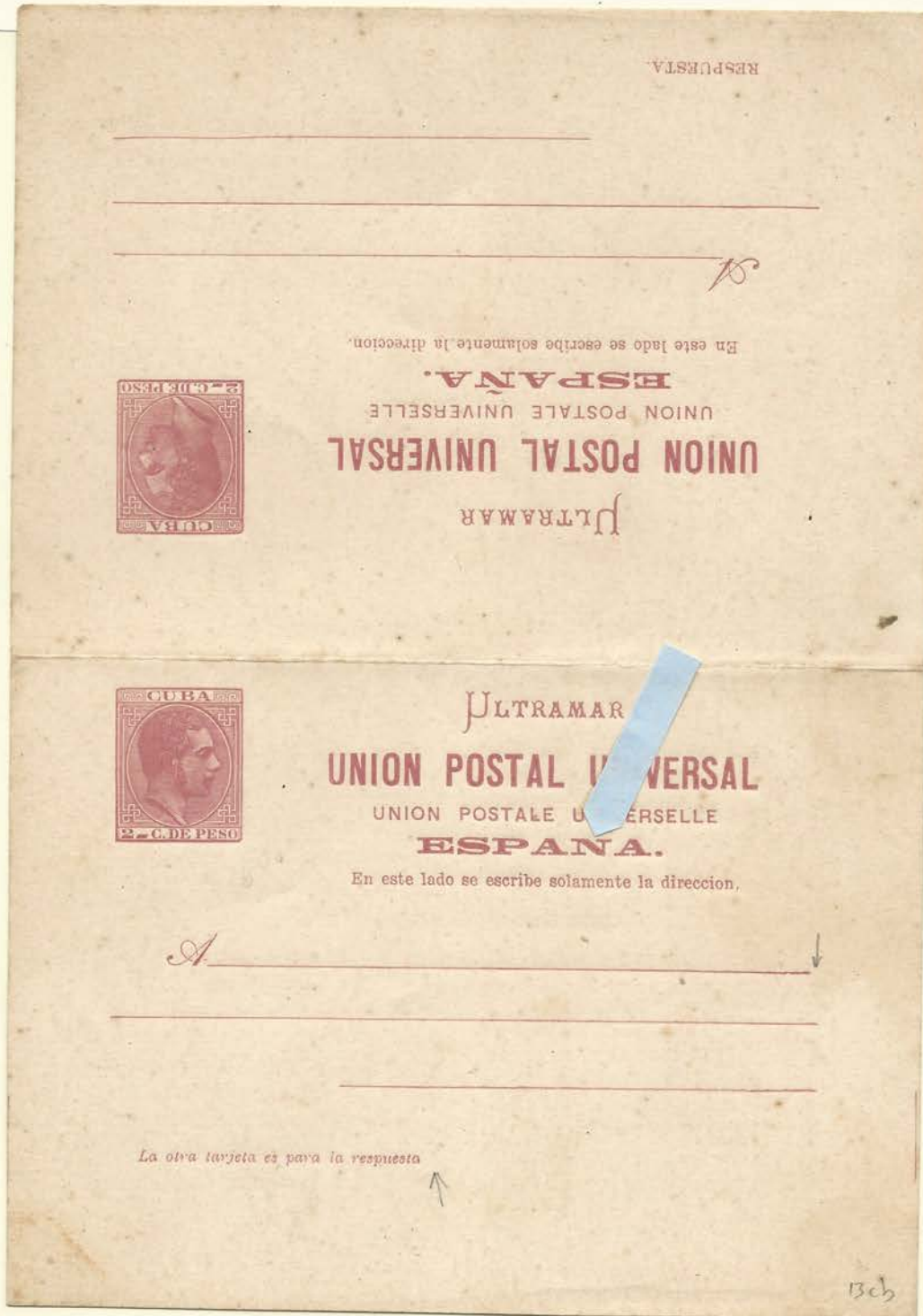
11



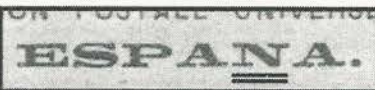
Second "A" of  
ESPAÑA  
rounded off

VARIEDADES

IDA: "Ñ" de "ESPAÑA" sin tilde y sin punto despues de "para la respuesta".



3a



No tilde on Ñ of ESPAÑA  
Transitory - 1882 reprints.  
Note: Similar error on Variety 10

D2

Message side of double cards only:  
No period after respuesta

13

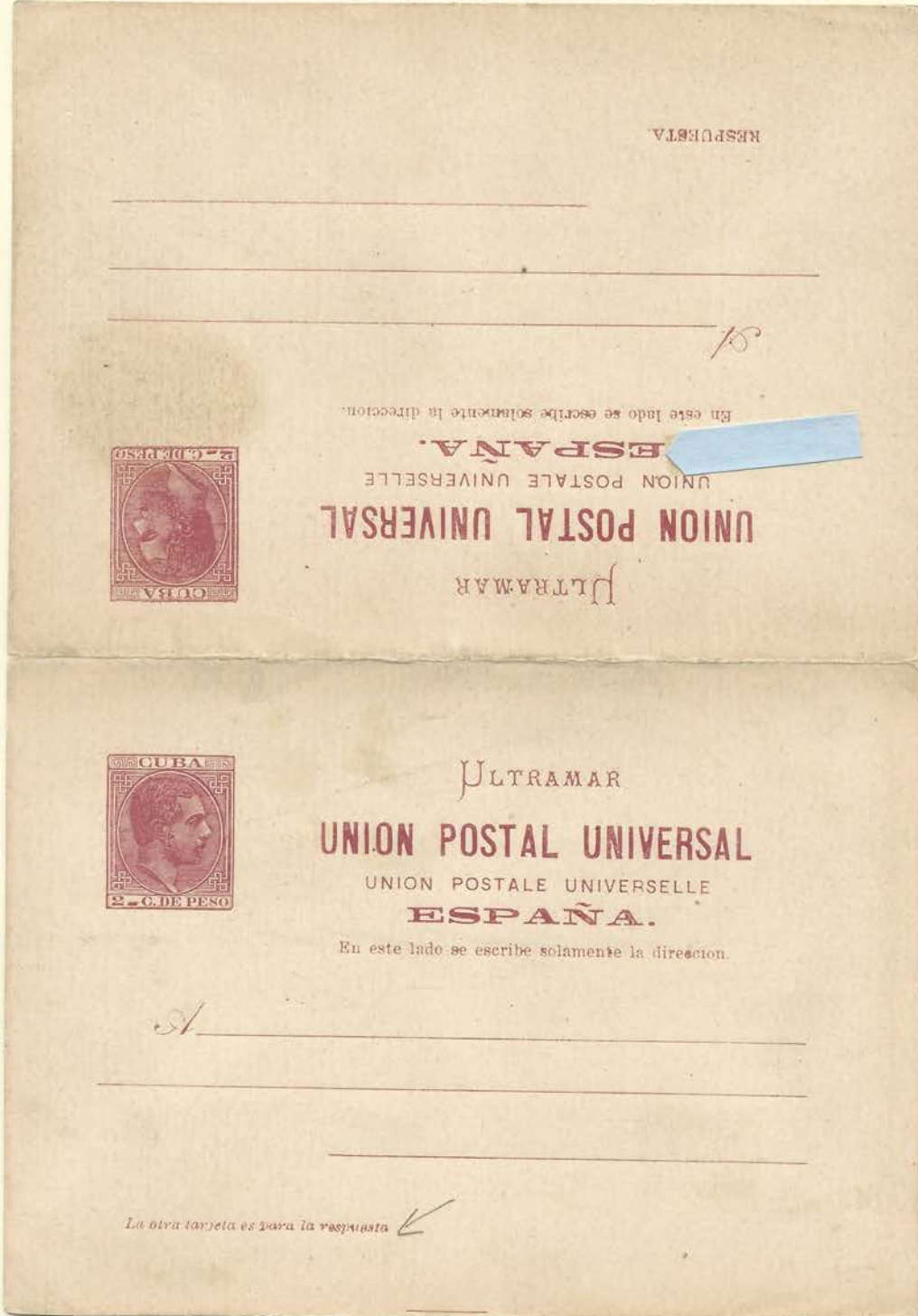
**ESPAÑA**

Broken top serif of "E" and  
nicked first "A" of *ESPAÑA*

VARIEDADES

IDA: Sin punto despues de "para la respuesta".

VUELTA: "E" de "ESPAÑA" rota.



Edcc  
50c

14

**RAM**

Top serif of "R" of *ULTRAMAR* is  
missing; sometimes in conjunction  
with broken "M" of *ULTRAMAR*

14

RAM

Top serif of "R" of *ULTRAMAR* is missing; sometimes in conjunction with broken "M" of *ULTRAMAR*



Ed 13  
Var  
No Cat.  
40e

4

UNION

Multiple nicks on the "U" of *UNION*

15

ULTRAMAR

"U" of *ULTRAMAR* is broken on both the top and bottom

D1

Reply side of double cards only:  
No period after *RESPUESTA*



Ed 13c  
48e

5

U M

Smashed top right end of "U" of *UNIVERSAL* and missing right serif of right leg of "M" of *ULTRAMAR*

7



Ñ of ESPAÑA is chipped

D1

Reply side of double cards only:  
No period after RESPUESTA

VARIEDADES

IDA: Sin punto en la segunda "i" de "dirección".

VUELTA: Sin punto después de "RESPUESTA"



Ed 13  
Var  
No Cat  
406

9



"UN" of UNIVERSAL damaged;  
"s" of este inverted

8a



Top of first "A" of *ULTRAMAR* nicked; crossbar of "A" of *UNIVERSAL* thin; broken "L" of *UNIVERSELLE*.  
 Transitory - Part of 1882 only.

RESPUESTA



En este lado se escribe solamente la direccion.  
**ESPAÑA.**  
 UNION POSTALE UNIVERSELLE  
**UNION POSTAL UNIVERSAL**  
 ULTRAMAR



ULTRAMAR  
**UNION POSTAL UNIVERSAL**  
 UNION POSTALE UNIVERSELLE  
**ESPAÑA.**

En este lado se escribe solamente la direccion.

La otra tarjeta es para la respuesta.

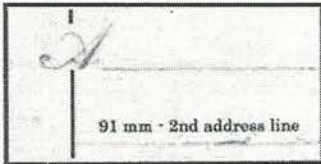
1



"M" of *ULTRAMAR* is missing the left serif of its right leg

Ed 13  
 Var  
 No Cat  
 406

6c



"U" of *ULTRAMAR* broken on the bottom only, sometimes in conjunction with a short (91mm) 2nd address line. Transitory - Part of 1881 & 1882.

VARIEDADES

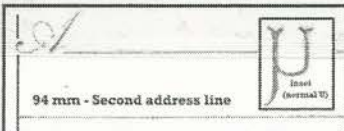
IDA : Segunda línea de la dirección más corta a la izquierda.

VUELTA: Sin curva en el extremo de la "U" de "ULTRAMAR". y sin punto después de "direccion"



Ed13c8  
48e

12b



Second address line short, 94 mm, commencing below left side of the "A" Transitory - Part of 1882 only Sub-variety of Variety 12

5

U

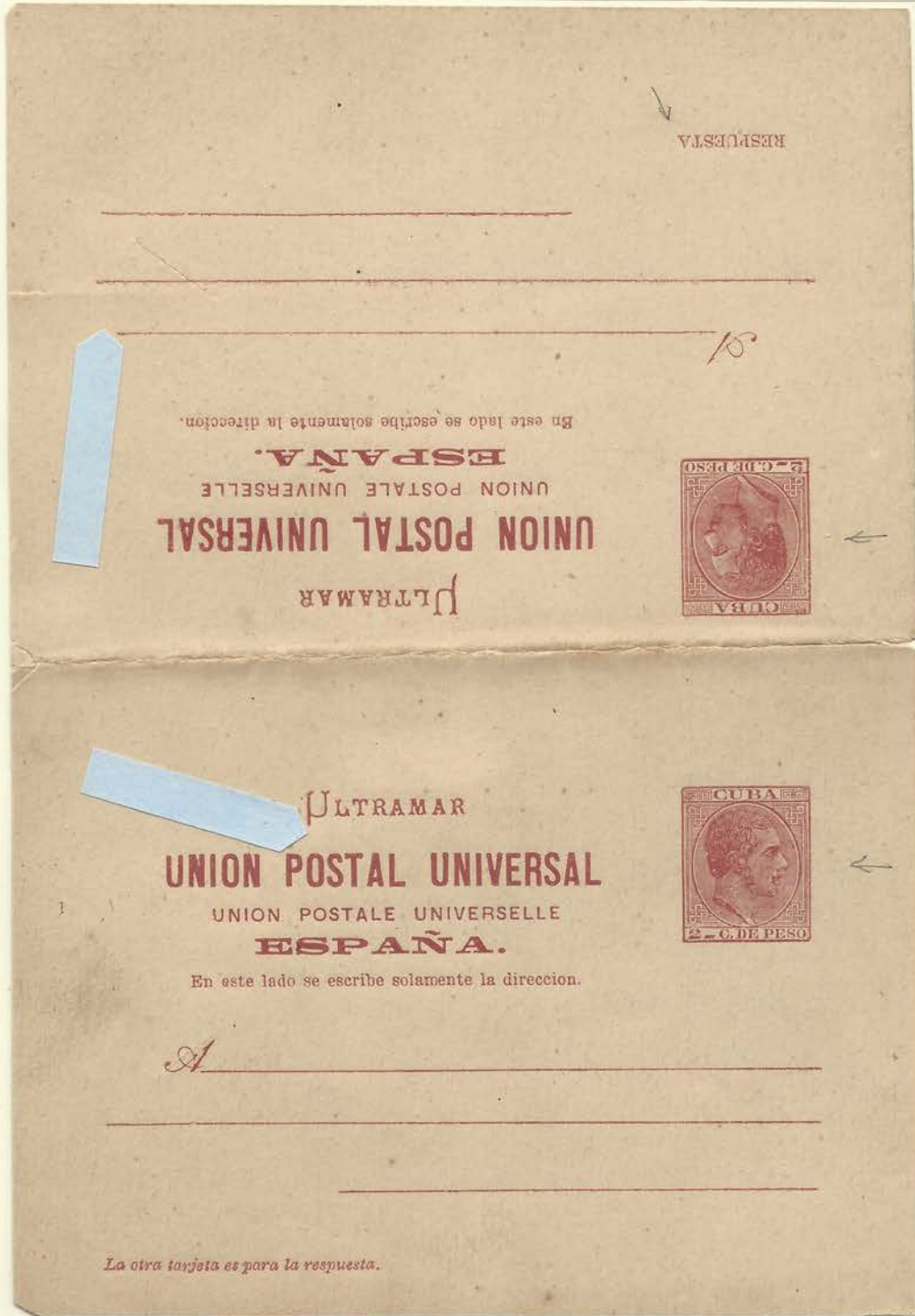
M

Smashed top right end of "U" of UNIVERSAL and missing right serif of right leg of "M" of ULTRAMAR

VARIETADES

IDA: Sin curva en el extremo de la "U" de "ULTRAMAR".

VUELTA: Sin punto después de "RESPUESTA" y 1ª línea de la dirección más corta a la derecha.



Ed 13Kc  
Error  
de Comp.  
Sello a  
la derecha  
160E

15

ULTRAMAR

"U" of ULTRAMAR is broken on both the top and bottom



14

RAM

Top serif of "R" of *ULTRAMAR* is missing; sometimes in conjunction with broken "M" of *ULTRAMAR*

VARIEDADES

IDA: Sin punto después de "respuesta". 3ª línea de la dirección corta al final.

VUELTA: Sin punto después de "RESPUESTA".



Ed 1309  
1606

4

UNION

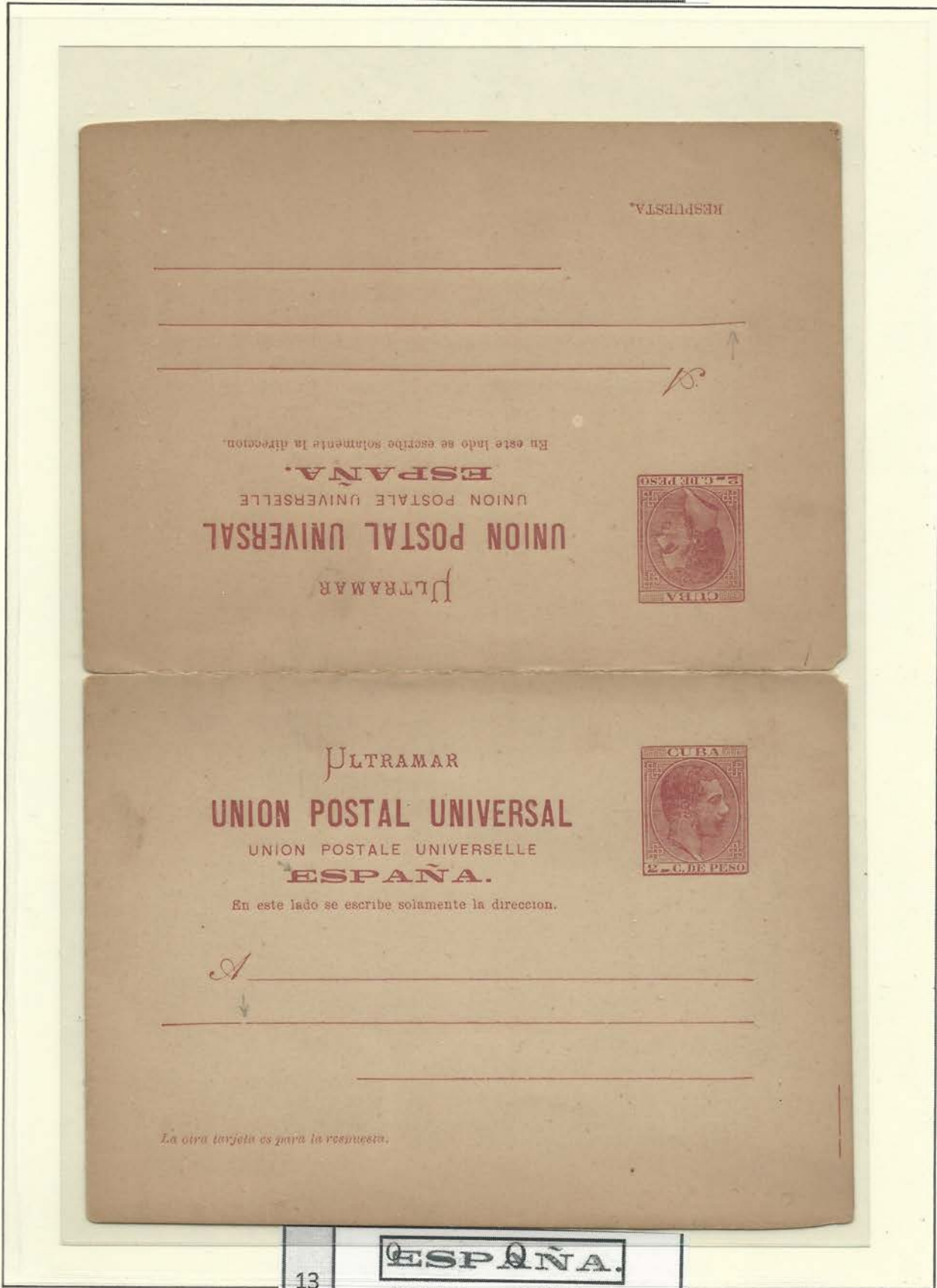
Multiple nicks on the "U" of *UNION*

9

UNI

este

"UN" of UNIVERSAL damaged;  
"s" of este inverted



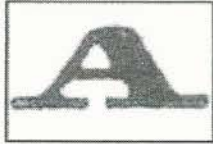
Ed 13 Eca  
160E

13

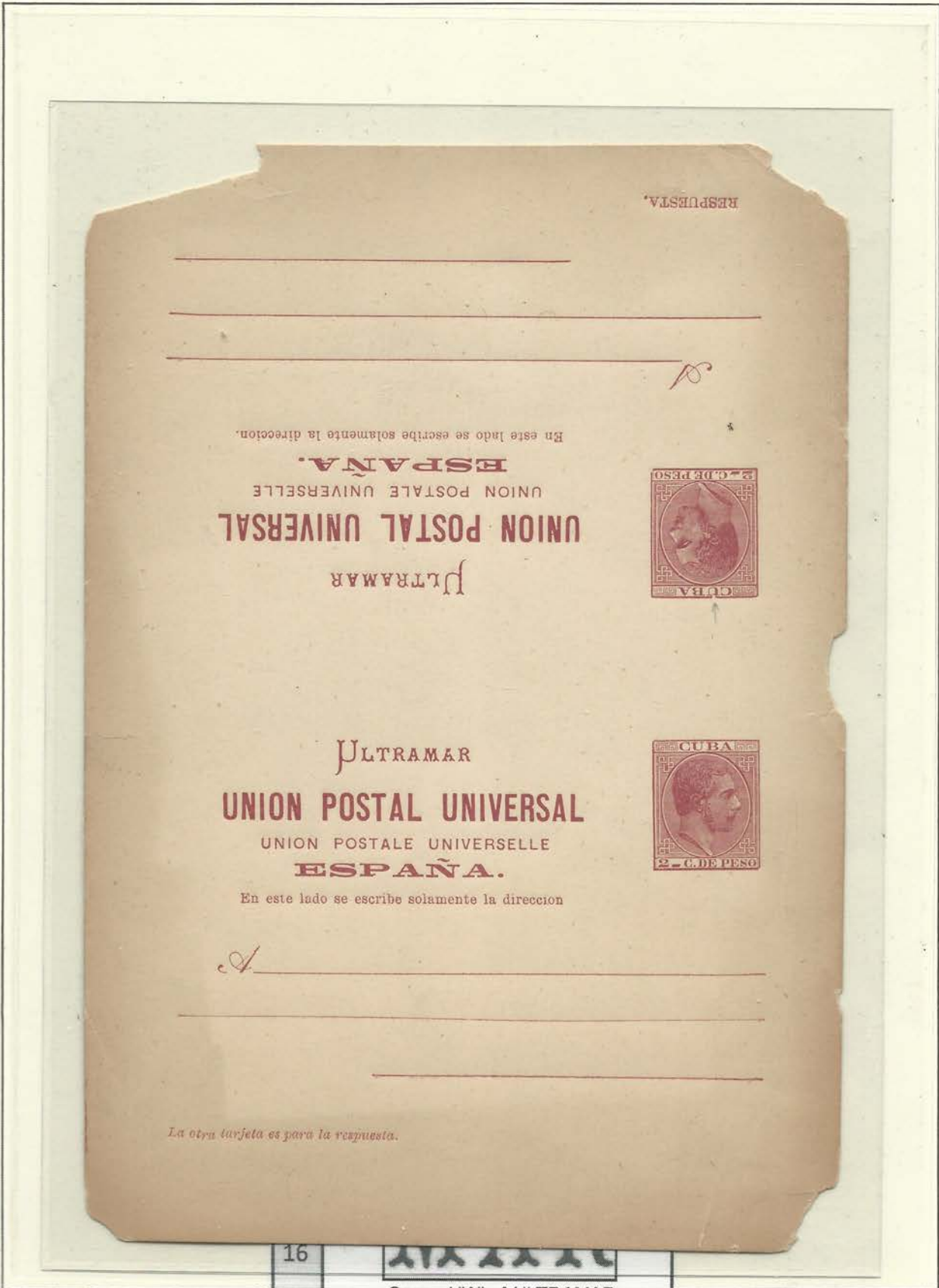
ESPAÑA.

Broken top serif of "E" and  
nicked first "A" of ESPAÑA

11



Second "A" of  
ESPAÑA  
rounded off



*Ed Ech*  
~~1600~~

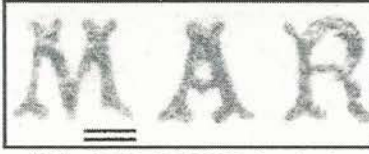
Not counted--  
too damaged.  
No contada  
por estar muy  
dañada.

16

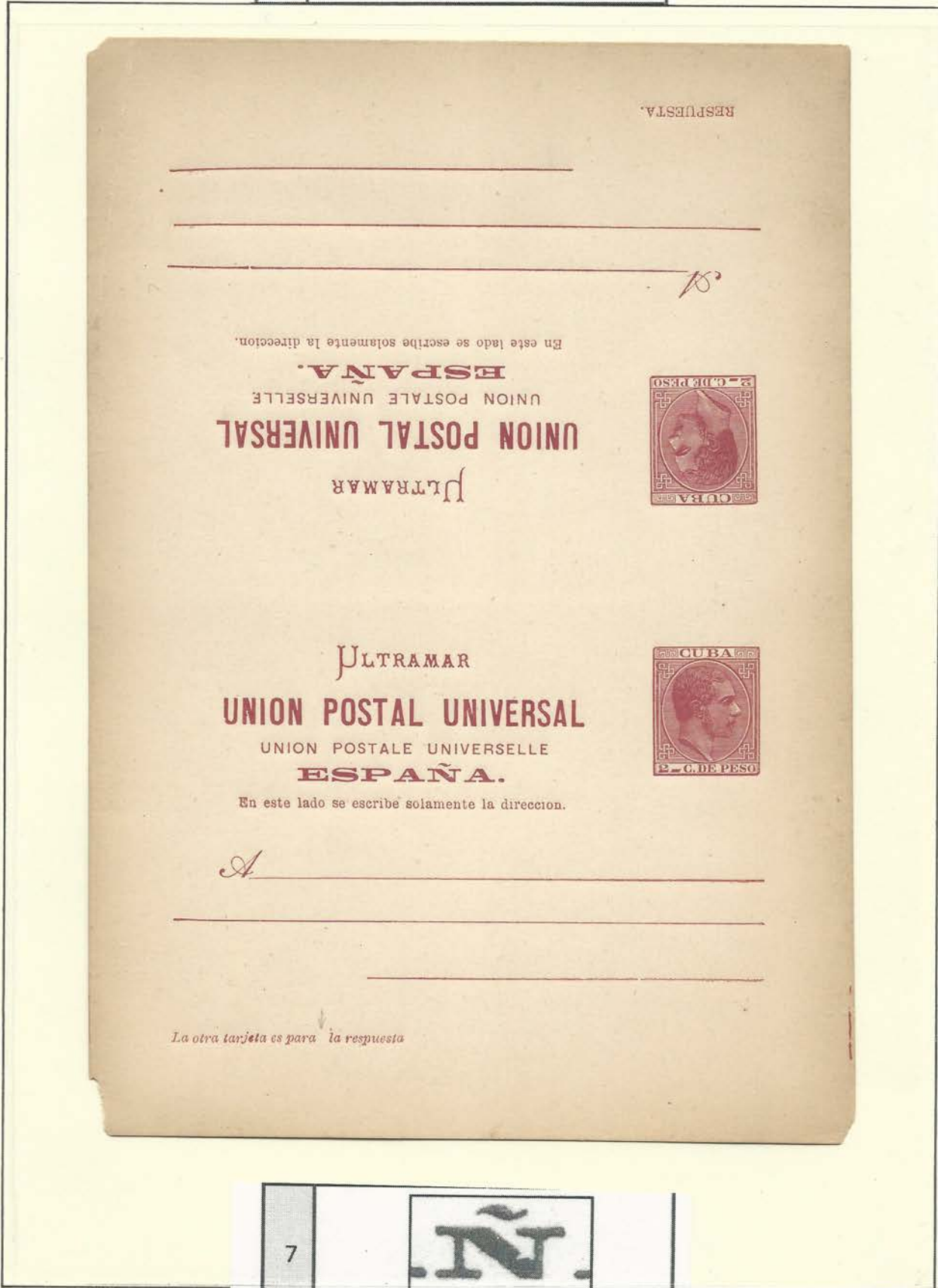


Second "A" of ULTRAMAR  
is chipped

1



"M" of *ULTRAMAR* is missing the left serif of its right leg



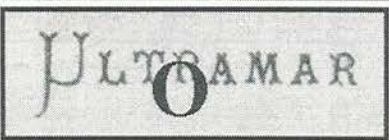
Ed Ecj  
160E

7



Ñ of *ESPAÑA* is chipped

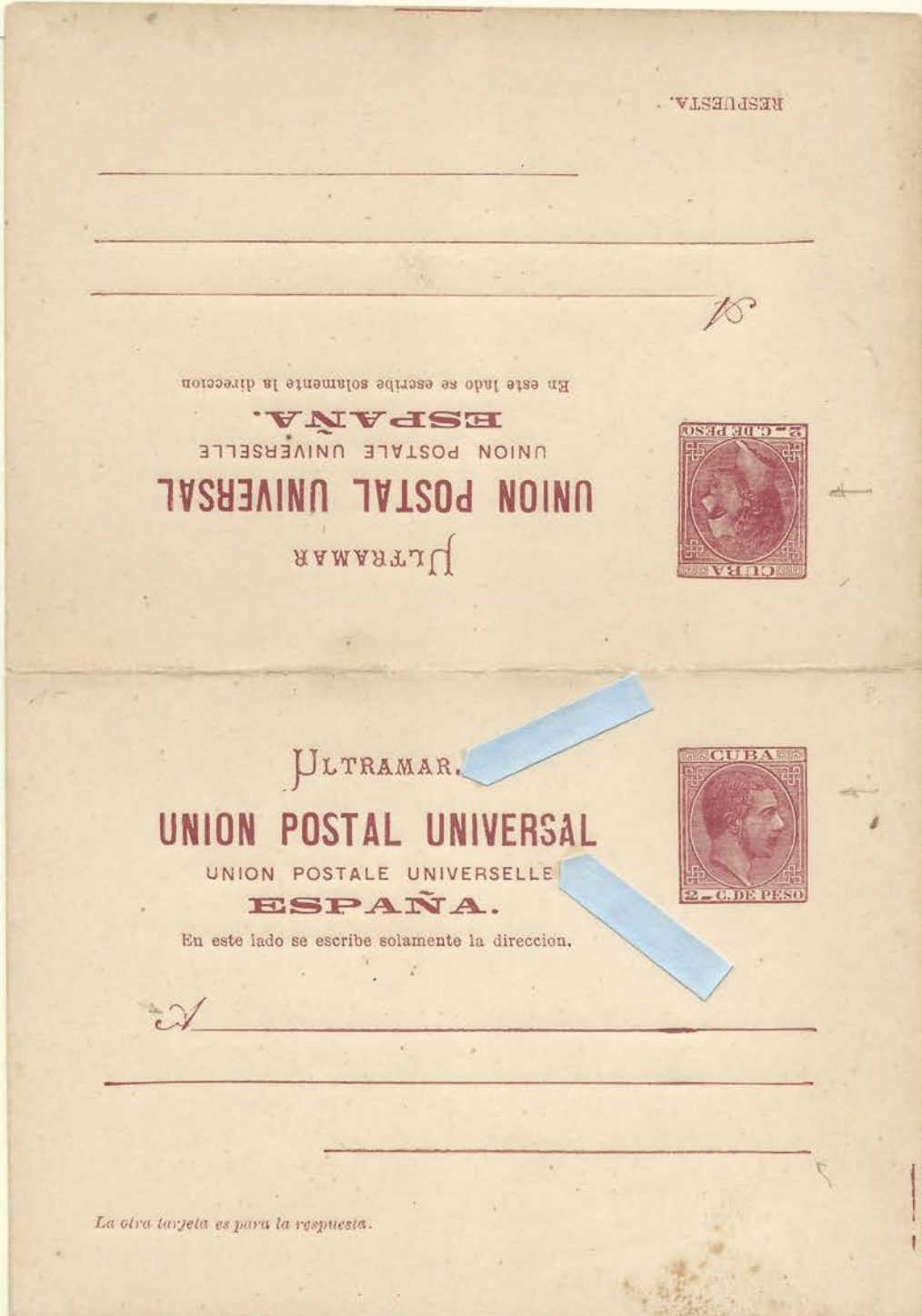
3b



Broken serif of left foot of first "R" of *ULTRAMAR*.  
Transitory - Part of 1882 only.

**VARIIDADES.**

**IDA.** Punto grueso después de "ULTRAMAR" y "SA" de UNIVERSAL" rotas



EdFeb  
180e

»LEUCHTTURM«

6b

UNIVERSAL

ULTRAMAR

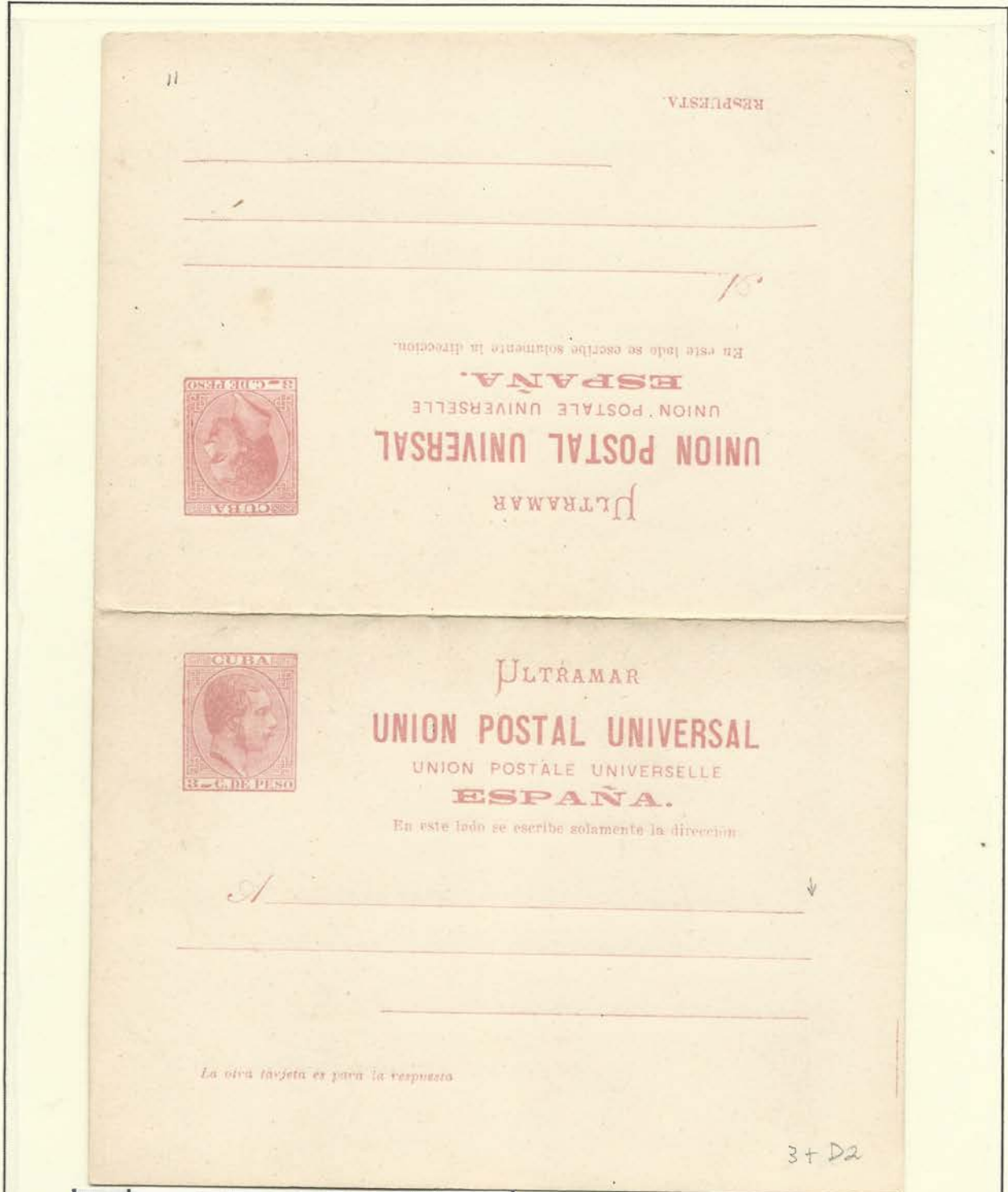
Breaks in the "SA" of *UNIVERSAL*;  
large period behind *ULTRAMAR*.  
Transitory - 1882 reprints.

13v

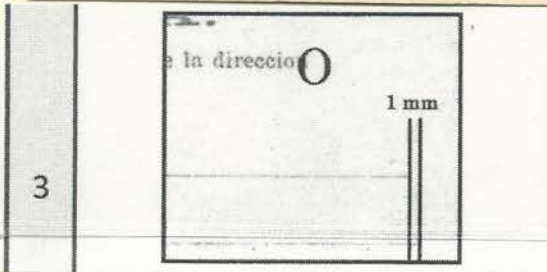
11



Second "A" of  
ESPAÑA  
rounded off



Ed 14  
Var  
No Cat.  
400



First address line is short by 1 mm;  
faint period or no period  
behind "direccion"

D2

Message side of double cards only:  
No period after *respuesta*

15

ULTRAMAR

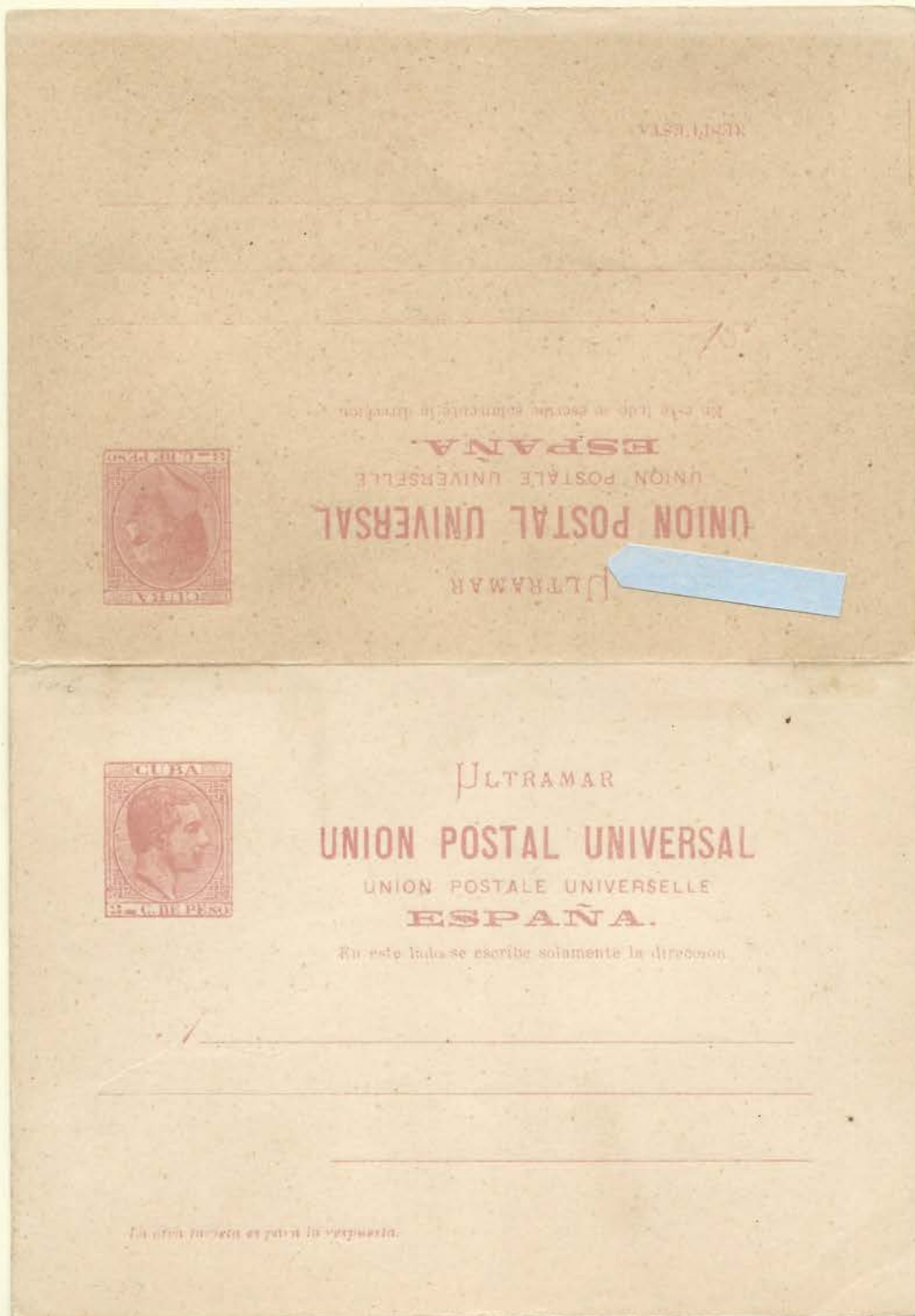
"U" of *ULTRAMAR* is broken on both the top and bottom

D1

Reply side of double cards only:  
No period after *RESPUESTA*

VARIETADES

VUELTA: "U" de "ULTRAMAR" rota.



Ed 14c  
54e

5

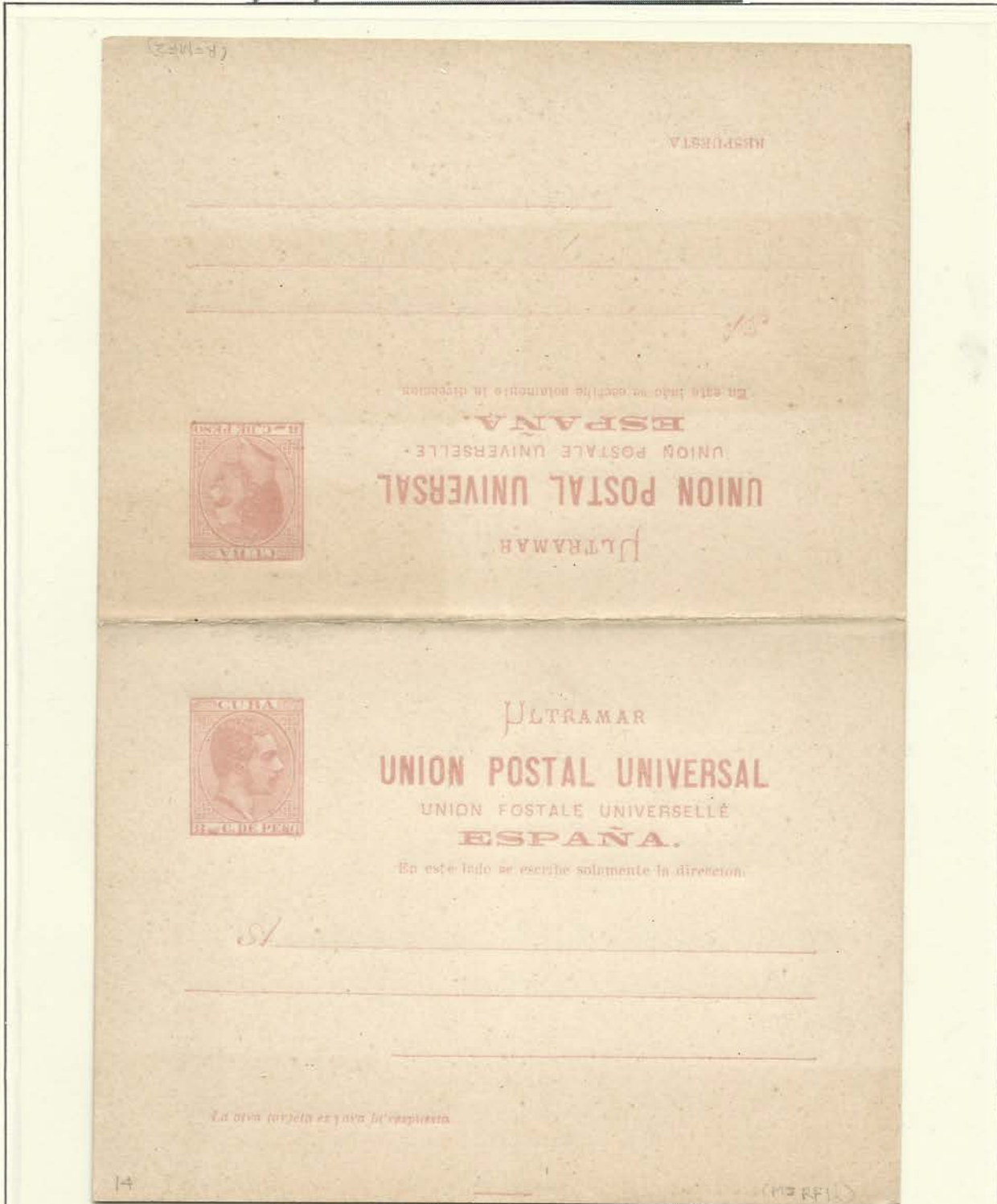


Smashed top right end of "U" of *UNIVERSAL* and missing right serif of right leg of "M" of *ULTRAMAR*

16

MAR

Second "A" of ULTRAMAR  
is chipped



Ed 14cb  
72c

9

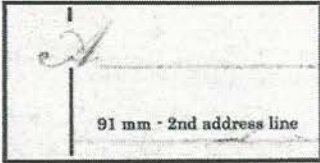
UNI

este

"UN" of UNIVERSAL damaged;  
"s" of este inverted



6c



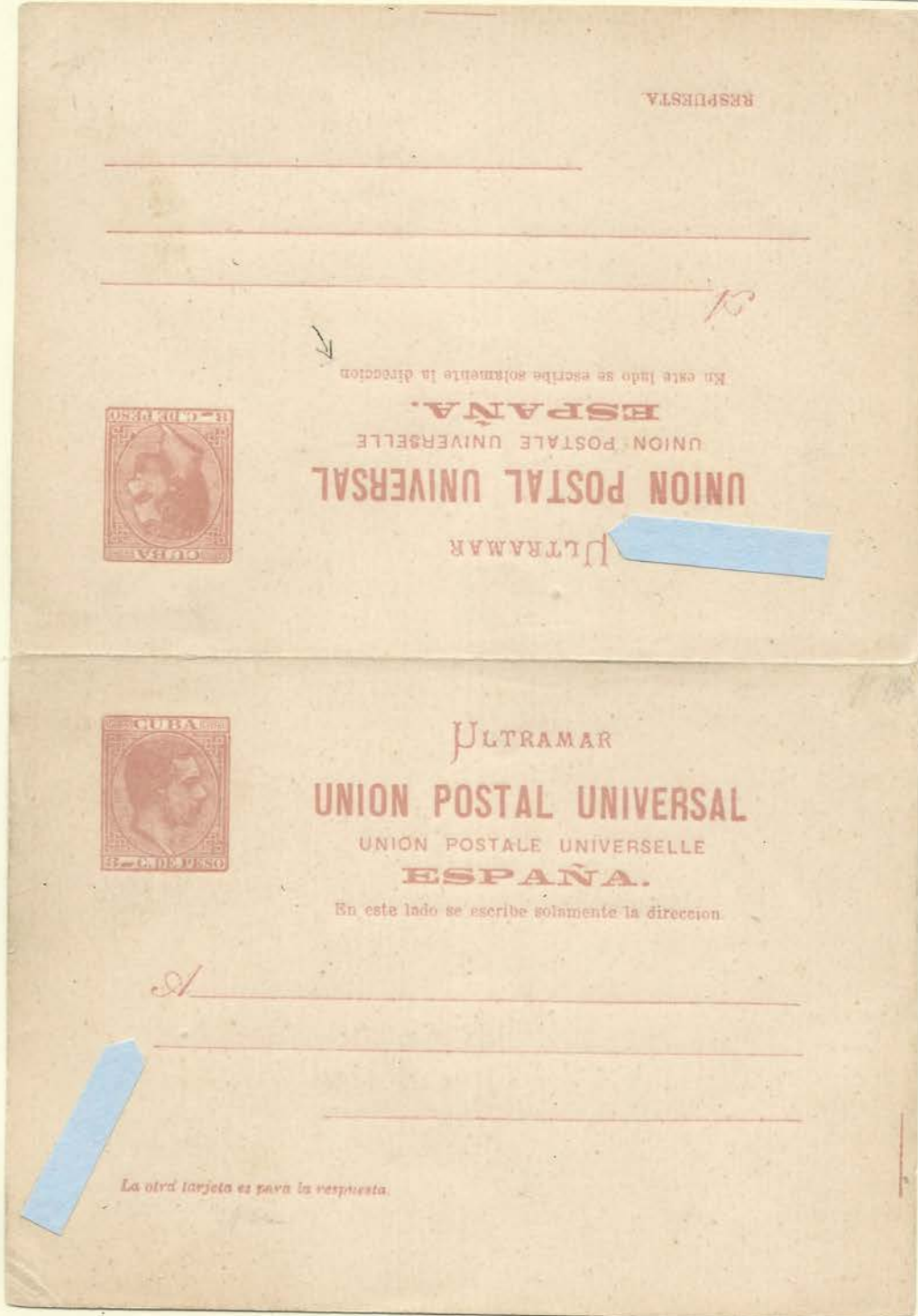
91 mm - 2nd address line

"U" of *ULTRAMAR* broken on the bottom only, sometimes in conjunction with a short (91mm) 2nd address line.  
Transitory - Part of 1881 & 1882.

VARIEDADES

IDA: Segunda línea de la dirección más corta a la izquierda.

VUELTA: Sin curva en el extremo de la "U" de "ULTRAMAR" y sin punto después de dirección.



Edited  
64c



Second "A" of  
*ESPAÑA*  
chipped

2

UNIVER

Nicked "N" and "V" of UNIVERSAL

VARIETADES

VUELTA: Sin punto después de "dirección". 2ª línea más corta a la izq

IDA: Sin punto en la segunda "i" de "dirección"



Edifef  
60E

10

L P

Chip in the inside angle of the "L" of UNIVERSAL and tapered serif on the base of the "P" of ESPAÑA

13

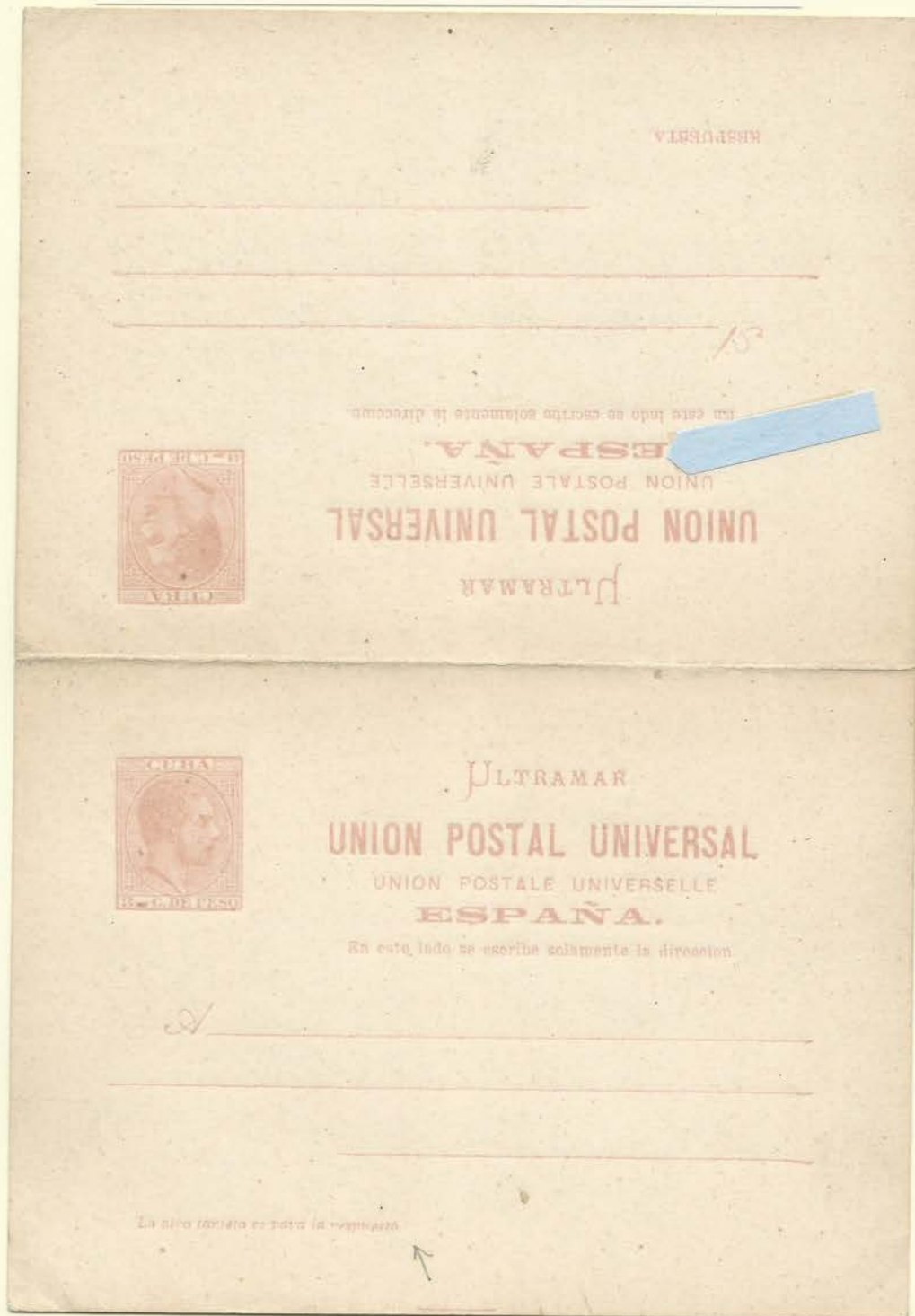
ESPAÑA

Broken top serif of "E" and nicked first "A" of ESPAÑA

VARIEDADES

IDA: Sin punto después de respuesta en el pie.

VUELTA: "E" de "ESPAÑA" rota.



Ed 14cc  
60E

1456

14

RAM

Top serif of "R" of ULTRAMAR is missing; sometimes in conjunction with broken "M" of ULTRAMAR

D2

Message side of double cards only:  
No period after *respuesta*

14 14cf  
1881/82

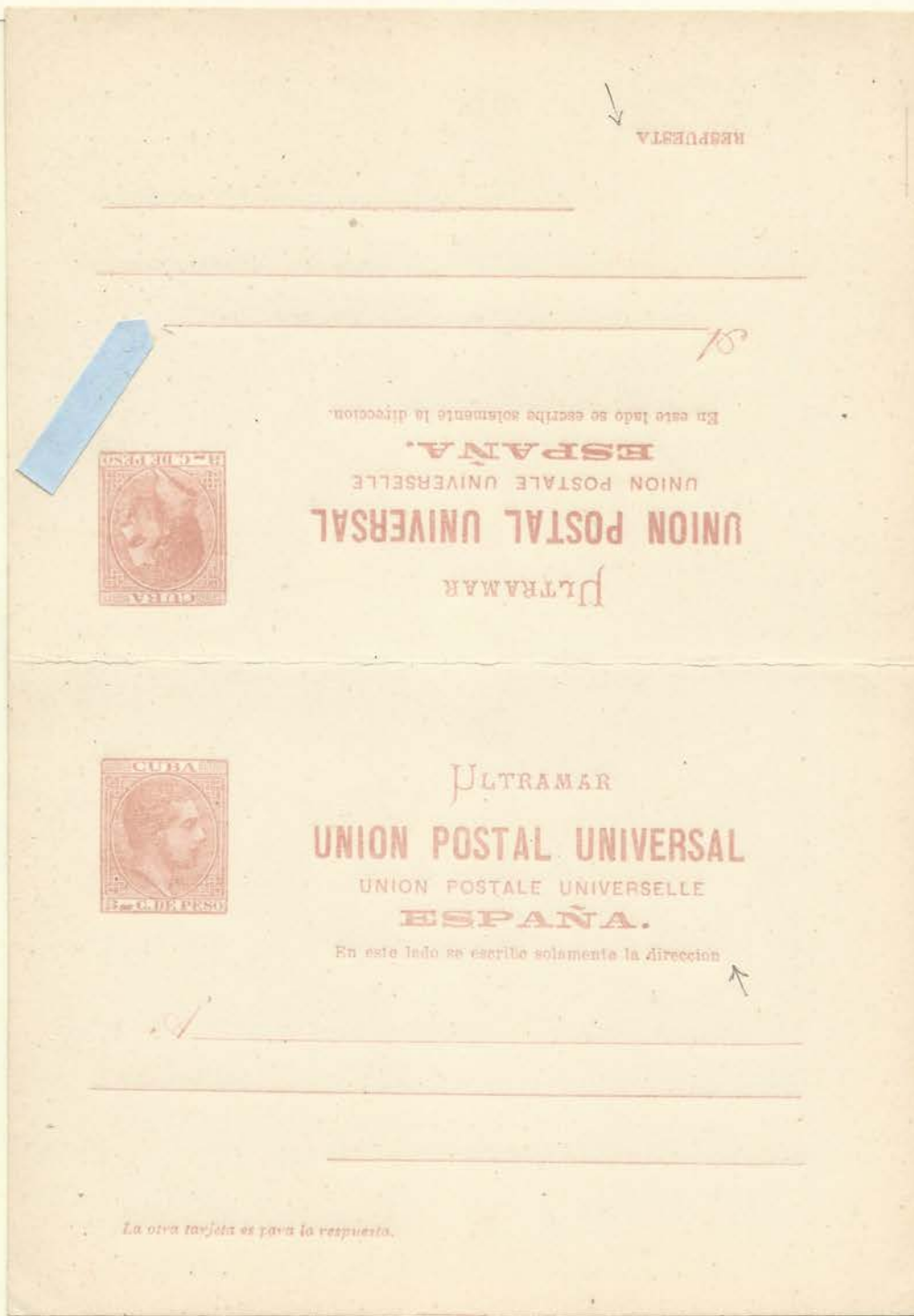
# UNION

Multiple nicks on the "U" of UNION

### VARIETADES

**IDA.** Sin punto después de "dirección"

**VUELTA.** 1ª línea de la dirección 10 mm. más corta al final y sin punto después de "RESPUESTA"

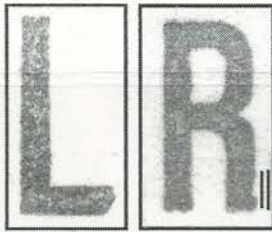


Ed 14ce  
60E

# MAR

Second "A" of ULTRAMAR is chipped

8



Bottom corner of "L" of *POSTAL* is missing and there is a small indentation in the "R" of *UNIVERSAL*



Ed 14  
Var  
No Cat.  
40€

1



"M" of *ULTRAMAR* is missing the left serif of its right leg